

PIC18 – Prototyping Kit for 18 pin Microchip PIC microcontrollers.

Examples:- 16F627(A), 16F628(A), 16F1826, 16F1827, 16F84 etc. etc.

Everything shown in the picture to the right is included in the kit except the PIC micro. The crystal supplied can be 4MHz or 10MHz if specified when ordering, otherwise 4MHz will be supplied.

The PCB is a high quality, gold plated, double sided PTH (plated through hole) 1.6mm FR4 (Fibreglass) board 78.5 x 54.5mm in size and includes a large prototyping area with pads on both sides of the board.

The 5V power supply for the PIC can be selected to be from the on-board 5V regulator or the Microchip ICD compatible connector, both the +5V and 0V power rails are extended along the top & bottom edges of the board for easy access.

An onboard RS232 level converter buffers the PIC UART to/from the 9 pin D connector, which is tracked for connection to a PC serial port. The RTS & CTS lines are also buffered and brought to CN7. The RS232 interface can be disconnected from the PIC using jumper links in CN5/6.

A 5 pin programming header is also provided to allow in-circuit programming from other programmers e.g. the MELABS serial or USB programmers.

Microchip PicKit 2 and PicKit 3 programmers can be connected via the ICD connector using our adaptor cable kit available from our website and pictured to the right.

Note that if using a PicKit 3 programmer the target must be powered and the PicKit 3 needs to sense the target power for it's output buffers, therefore link all 3 pins of CN4 together.

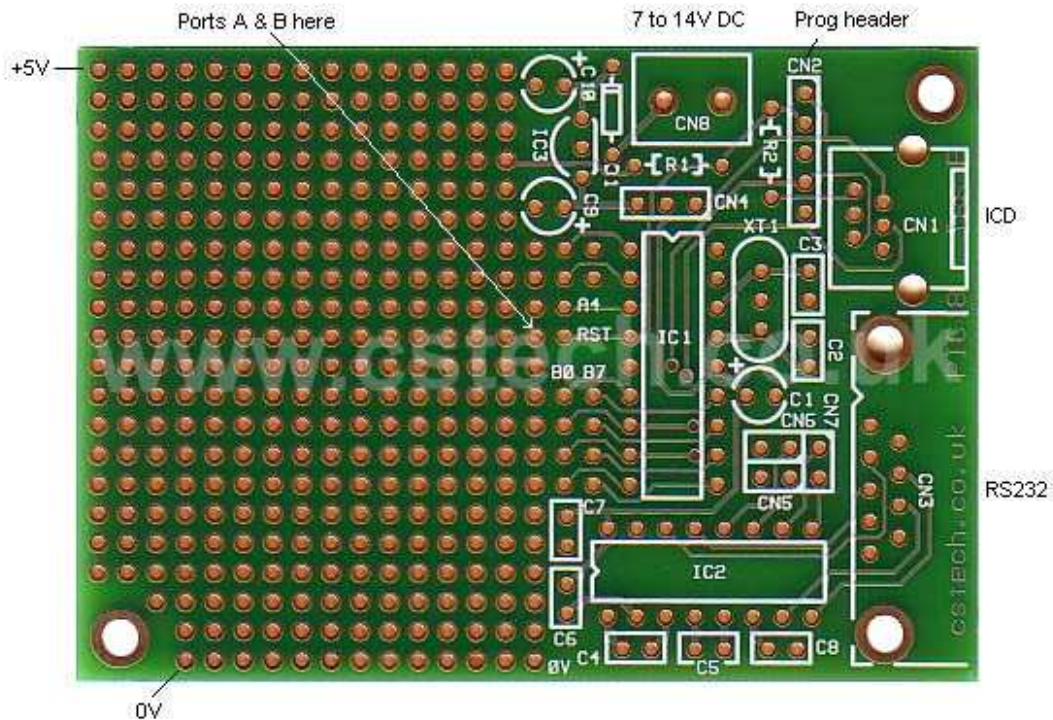


All parts shown in the assembled photo are included as well as some extras resistors for alternative input configuration.

All parts and the PCB are RoHS compliant and can be soldered with tin/lead or lead free solder.



cstech.co.uk PicKit 2/3 to ICD adaptor kit



PIC18 Parts List

Part	Type
IC1	18 pin high quality turned pin IC Socket
IC2	HIN232
IC3	78L05
D1	1N4148
XT1	4MHz or 10MHz (please specify when ordering or 4MHz supplied)
R1	10K
R2	100R
C1, 9, 10	1uF Tantalum 25V
C2, 3	33pf Ceramic Disk
C4, 5, 6, 7, 8	100nF Multilayer Ceramic (marked 104)
CN1	RJ12 Socket
CN2	5 pin Header
CN3	9 pin D Socket
CN4	3 pin Header
CN5, 6, 7	Supplied as 6 pin Header 2x3 way
CN8	2 way Terminal Block

Supplied with:-

PIC18 PCB Issue B
 3 x 0.1" Jumpers
 Crystal insulator pad

This document, product description, PCB design, circuit design and firmware are copyright © C S Technology Ltd T/As cstech.co.uk

